



PRODUCT BULLETIN

URGENT: Please distribute copies to the following people within your organization:

- Owner Sales Customer Service Service Techs

Subject: TRIO™ Arm Enhanced for EV Applications

Dear valued distributor,

We are pleased to announce, the Rotary Lift Patented two-piece, three-stage TRIO™ arm, has undergone further enhancement from November 2020 production.

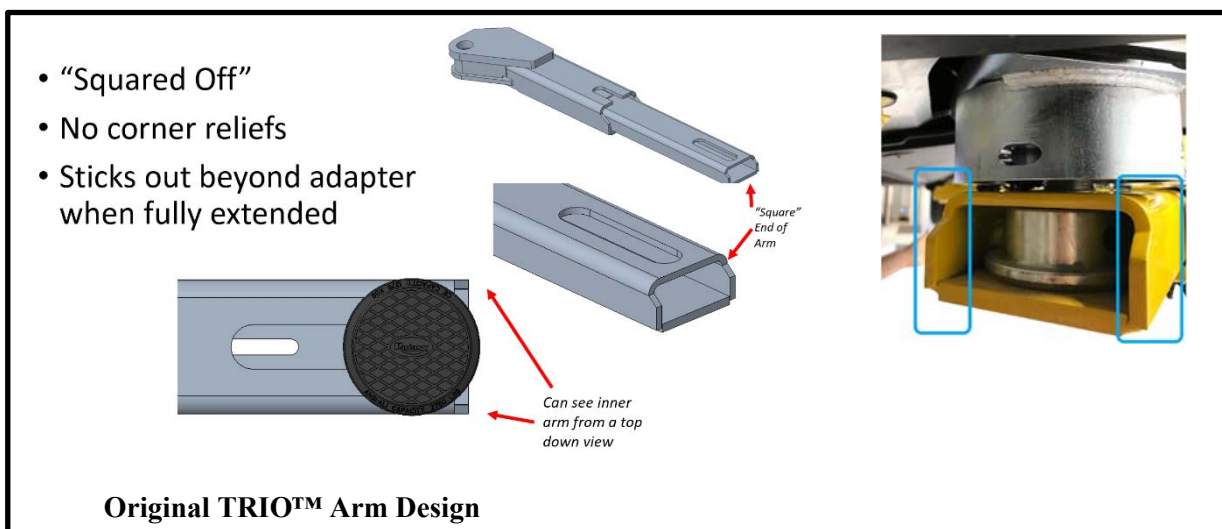
The end of the TRIO™ inner arm has been updated to a round contour. Both end corners are now cut back to help relieve obstruction outside of the pad adapter profile.

The updated design allows for better technician access for servicing vehicle underbodies and additionally EV applications. Please note, this enhancement does not affect safety, capacity, or performance of the arm.

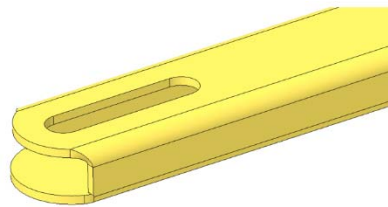
Please note, this is a running change in production, TRIO™ arm model numbers listed below will remain unchanged.

Model number
N2393
N2394
N2395

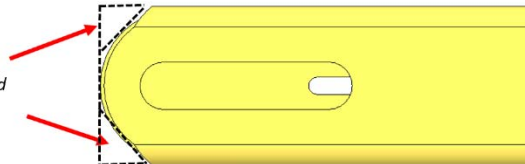
Please review below for visual comparison of the arm change:



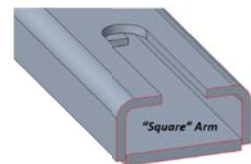
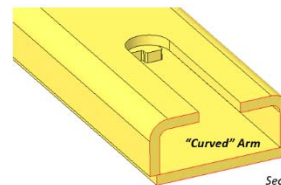
- End of the arm is now round
- Both corners get cut back
 - This helps to relieve space outside of the adapter profile for servicing underbodies of vehicles



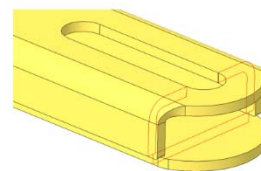
Relieve both corners at the end of the inner arm



- At the center of the adapter the cross-section remains the same as the current arm style
- The “round” in the arm starts after the center of loading



Section View, end of arm not visible, still have a full cross-section in the inner arm



The “curve” starts after the center of the adapter (center of load) so the strength is the exact same in worst case loading

Enhanced TRIO™ Arm Design

For any enquiries relating to this announcement, please contact our customer support at
huihua.lu@rotaryliftdasia.com
cmiller@vsgdover.com
elvis.wang@rotaryliftdasia.com

Regards,

VSGA Customer Service
 2021-02-08